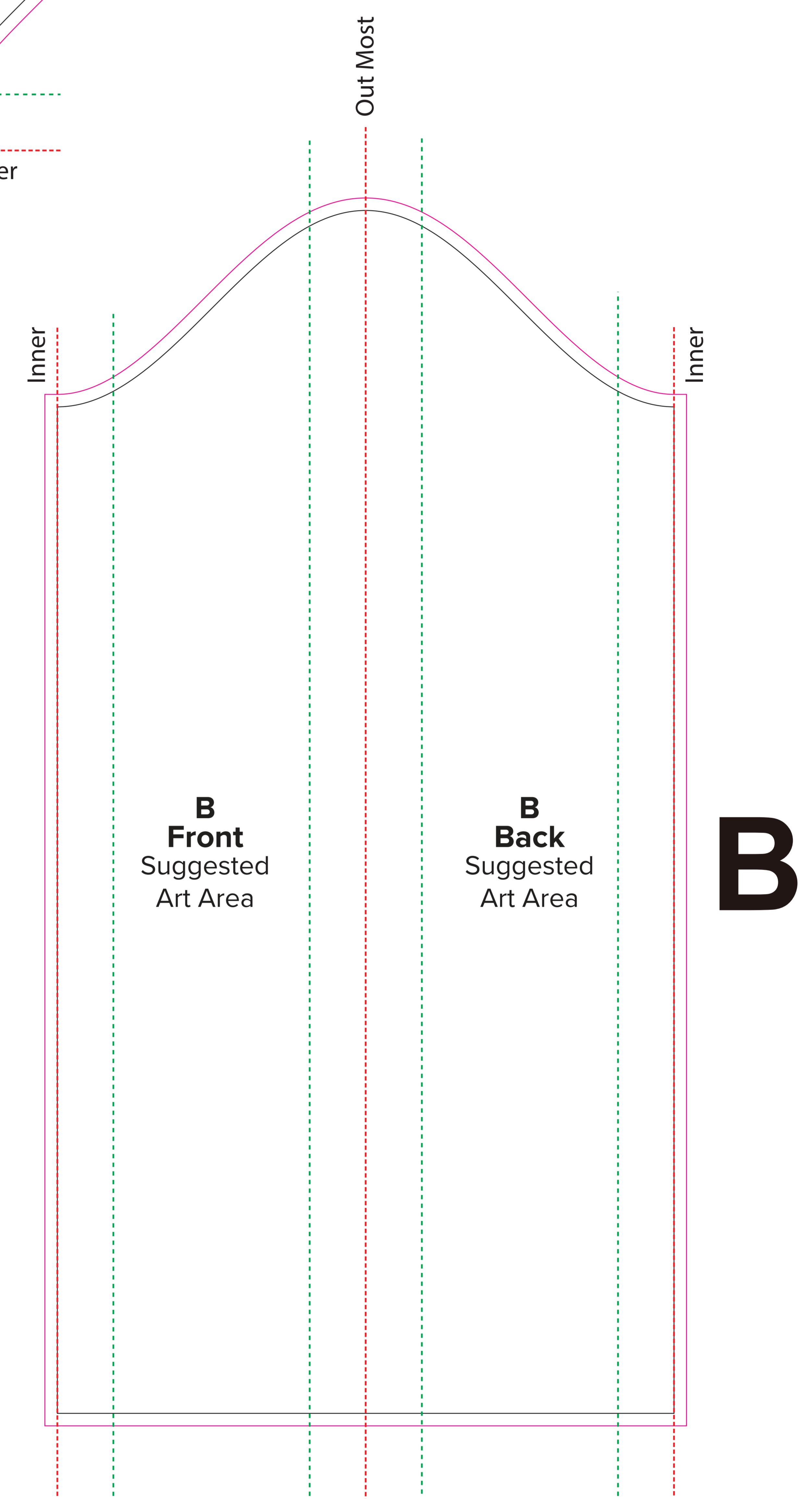
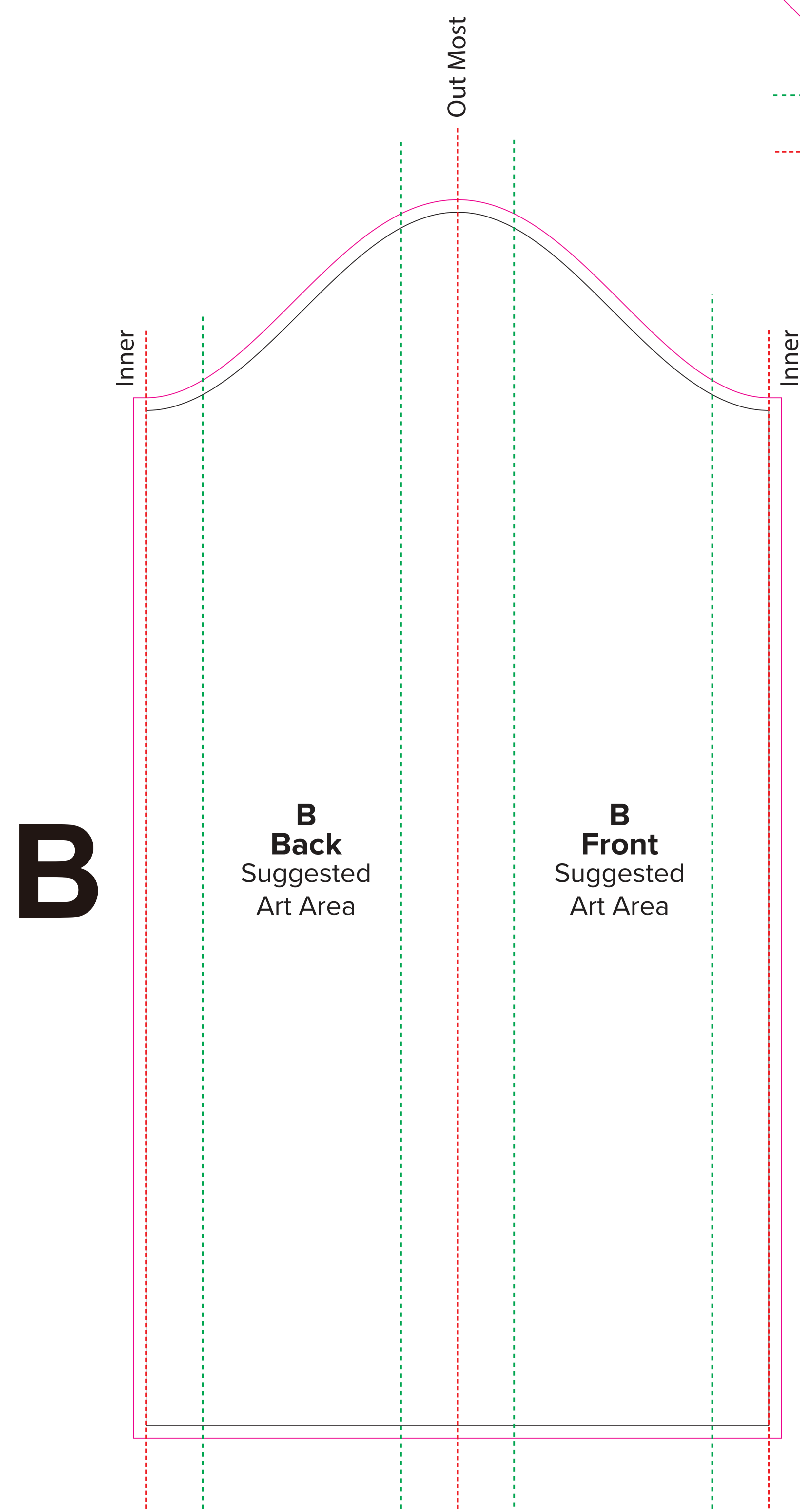
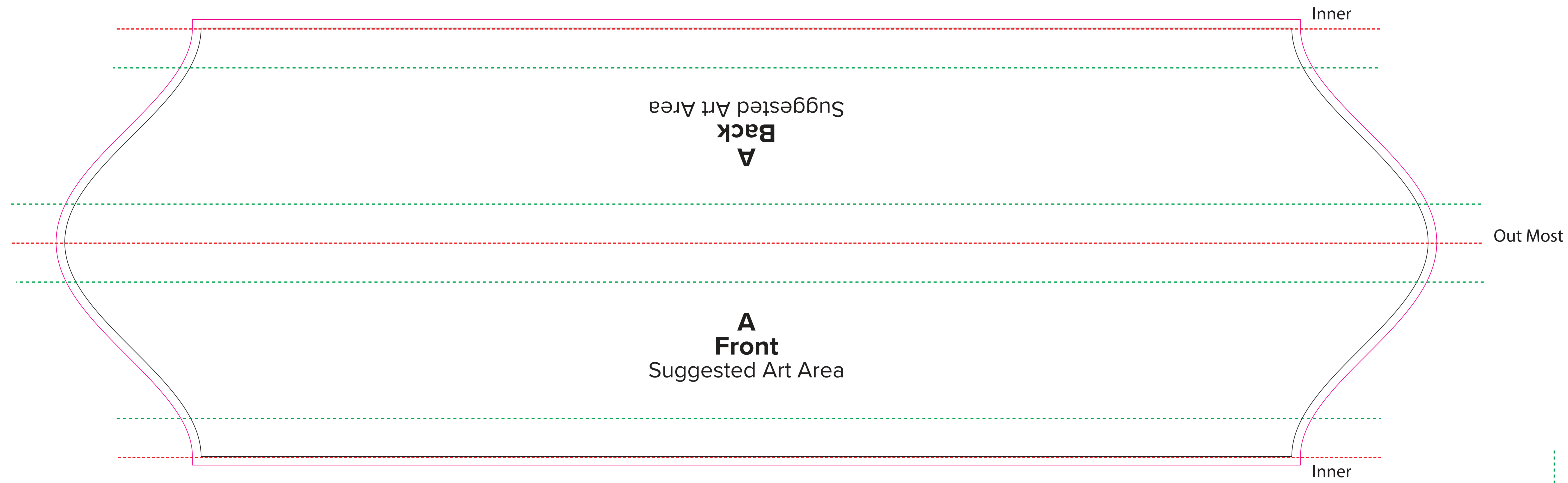


**SCALE 1/10  
OF ACTUAL SIZE**

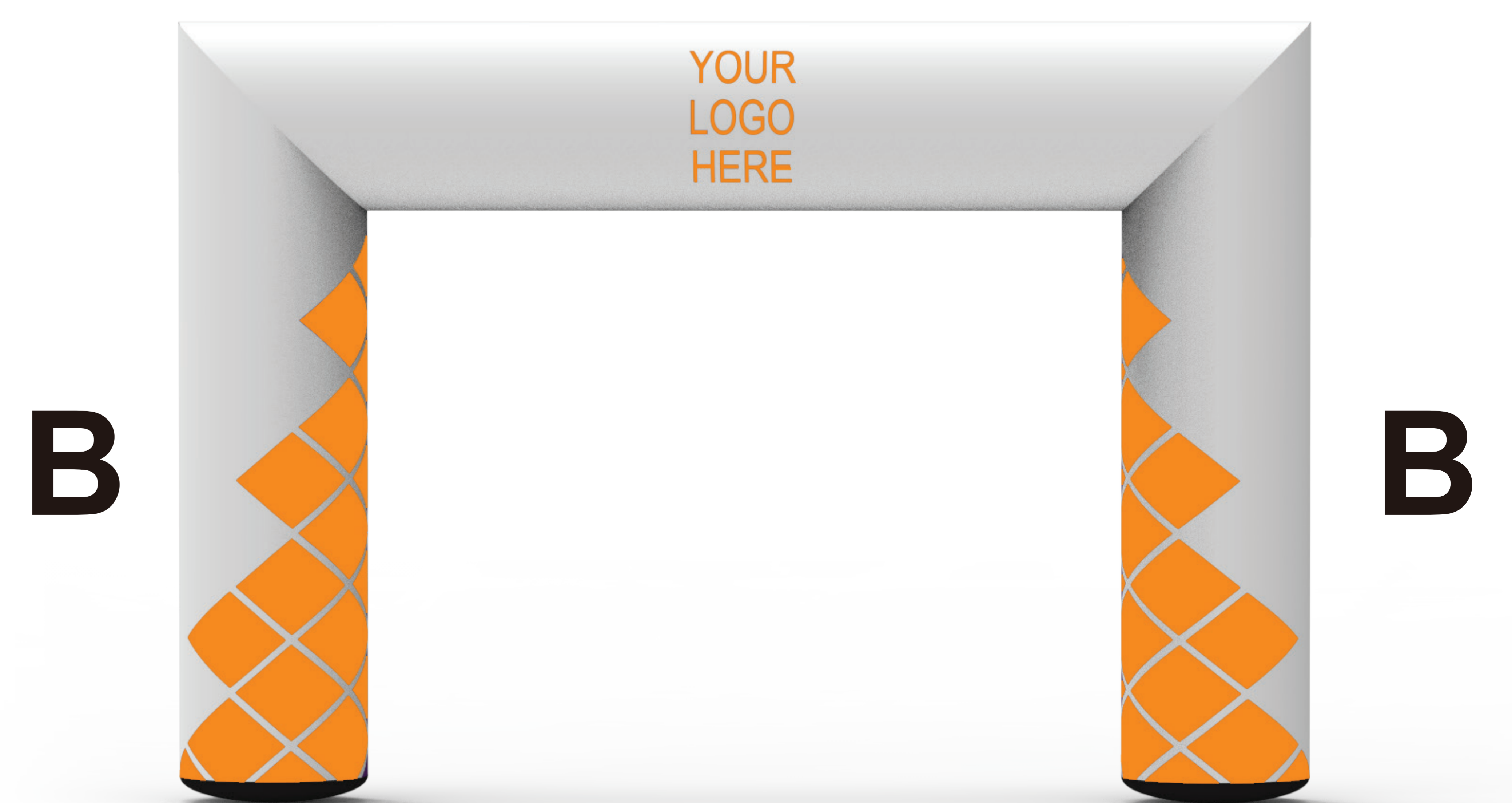
# Arch - Airflow

26 ft x 16 ft 31"D

**A**



**A**



**Adobe Illustrator (Mac or PC)** - convert your fonts to outlines and save as native Illustrator format (.ai). Artwork should be in only vector format. Artwork should be in CMYK. **!!Preferred!!**

• Vector: Adobe ILLUSTRATOR CS6 or earlier versions: .AI, .EPS, or print ready .PDF files.

**Adobe Photoshop (Mac or PC)** - rasterize your fonts and save files as .psd (if you have layers) (or need transparency). Will also accept Photoshop EPS formats. Image resolution should be 150 dpi at 100% size the artwork is to be printed at. (or 300 dpi and 1/2 the actual size to be printed)

• Raster: Adobe PHOTOSHOP CS6 or earlier versions: .PSD, .TIFF, High res. .JPG or print ready .PDF files.

- All fonts need to be outlines in order to avoid any defaulted text
- Digital imaging will be output in CMYK process
- Use ZIP compression for multiple files

□ Trim Line  
Most of your artwork should be within this area

□ Safe Guide  
Important Art should be within this area

□ Bleed  
Area will not print

□ Sewing Line